

Vectis Door Handle

**VECTIS
PLUS +**

Features

- Complete integrated handle solution for the Vectis Locking system
- Stylish Regency and Classic lever/lever and lever/pad designs available
- Patented key guide system to suit all profile's and sizes for ease of key alignment
- Unique patented integral shutter system on the external face of the handle back plate for PAS 023 assurance
- Suites with all Ikon Classic and Regency door furniture
- High corrosion resistance - Advanced Zircon® PVD Finish
- Solid handle grip
- Suitable for PVC-u, aluminium, composite and timber doors
- 10 year performance guarantee

Revolutionary Design

Vectis is a unique range of door furniture that combines modern stylish design with traditional key locking to suit the new Vectis multi-point locking system.

Designed with a patented internal key guide mechanism to guide the key into the lock and a unique patented integral shutter system; the Vectis door furniture range ensures excellent weather sealing and has been designed to meet the requirements of PAS 023 – air, wind and water tests.

Designed with an ergonomically solid grip and a softly rounded back plate; both handle designs have been developed for improved performance, but can be supplied with optional spring cassettes if required.

Manufactured from high quality aluminium or zinc and protected by an advanced coating process. Handles are available in Zircon Gold and Chrome PVD, powder coated white and black finishes.



Patented Product



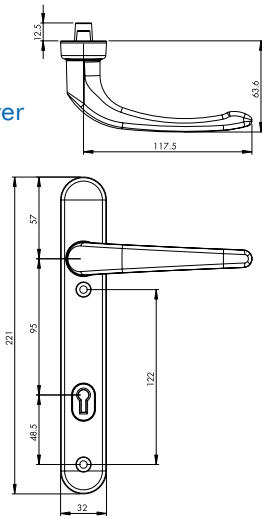
The Door Lock People



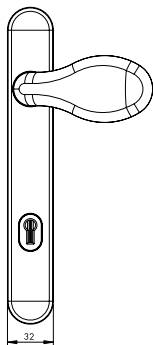
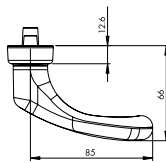
**10 YEAR
GUARANTEE**

Vectis Door Handle

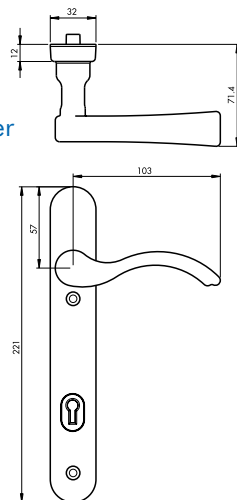
Vectis Classic Lever/Lever



Vectis Classic & Regency Lever/Pad



Vectis Regency Lever/Lever



All dimensions are in mm and are nominal.



The Door Lock People

Product Options

HANDLE	INSERT
PVD Gold	Polished Gold or Bright Chrome
PVD Chrome	Bright Chrome
White	Bright Chrome
Black	Bright Chrome

Product Codes

VECTIS CLASSIC (Spring cassettes supplied separately)					
Handle Cassette	PVD Gold Polished Gold	PVD Gold Chrome	PVD Chrome Chrome	White Chrome	Black Chrome
Lever/ Lever	DHVDGICA101N	DHVDGICA102N	DHVCICA101N	DHVHICA101N	DHVKICA101N
Lever/ Pad	DHVDGICA201N	DHVDGICA202N	DHVCICA201N	DHVHICA201N	DHVKICA201N

VECTIS REGENCY (Spring cassettes supplied)				
Handle Cassette	PVD Gold Brass	PVD Chrome Chrome	White Chrome	Black Chrome
Lever/Lever Left Hand	DHVDGIRA101L	DHVCIRA101L	DHVHIRA101L	DHVKIRA101L
Lever/Lever Right Hand	DHVDGIRA101R	DHVCIRA101R	DHVHIRA101R	DHVKIRA101R
Lever/Pad Left Hand	DHVDGIRA201L	DHVCIRA201L	DHVHIRA201L	DHVKIRA201L
Lever/Pad Right Hand	DHVDGIRA201R	DHVCIRA201R	DHVHIRA201R	DHVKIRA201R

SPRING CASSETTES
DASGWA0001

Technical Information

All products are subject to endurance testing designed to guarantee long-term trouble-free performance.	
Corrosion resistance:	Meets the requirements of BS EN 1670:2007 Grade 4 – 240 hours
Operation:	Tested 100,000 cycles

Material Specification

Classic Grip & Back Plate:	High quality aluminium casting back plate and grip with PVD or powder coated finish, non handed.
Regency Grip & Back Plate:	High quality aluminium casting back plate and a zinc grip with PVD or powder coated finish, handed.
Internal Key Cassette:	ABS, with a bright chrome finish to suit all powder coated and PVD gold and chrome handles, or a polished gold finish to suit PVD gold handles
Handle Finish:	White powder painted coated – Hypca White, 60% Gloss Black powder painted coated – RAL 9005, 30% Gloss Zircon Gold and Chrome PVD
Screw:	Mild steel, yellow passivated, head to match finish, 2 x M5 x 75/83mm
Spindle:	Mild steel, yellow passivated, 8mm square

Packaging Information

ITEM	No. PER CARTON
Zircon Gold	5 pairs
Zircon Chrome	5 pairs
White	5 pairs
Black	5 pairs
Spring Cassettes	10 pairs per bag, 50 bags per box

Handles are supplied complete with spindles, and matching screws. Spring cassettes can be supplied to order for aluminium handles.

Maintenance

All handles should be lightly lubricated twice per year and the surface cleaned with a soft damp cloth to remove any dust or grime, taking care not to scratch the surface.

It is the responsibility of the door manufacture to ensure that the finished product meets any required safety and performance specification.

The manufacturers reserve the right to modify any features stated within this data sheet without prior notice.

The manufacturer uses materials in the manufacture of its products which may be environmentally recycled at the end of their useful life in accordance with a commitment to BS EN ISO 14001:1996

Call now on 01922 490000 or visit www.era-vectis.co.uk